

Hi-SPAN

STANDARD DRAWINGS 2017



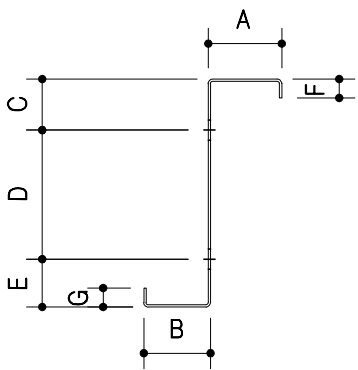
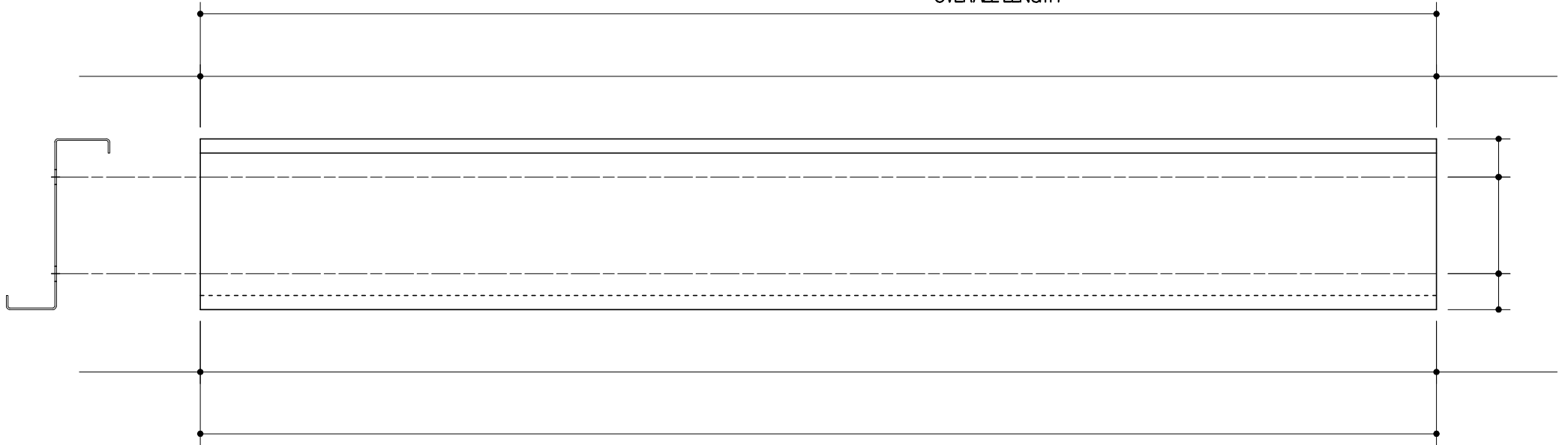
CONTROL ISSUE:

Hi-Span Standard Drawings Register 2017

<u>DRG. No.</u>	<u>REV.</u>	<u>DESCRIPTION</u>
HS-001	<input type="checkbox"/>	Purlin / Rail Fabrication Detail
HS-002	<input type="checkbox"/>	C-Channel Fabrication Detail
HS-003	<input type="checkbox"/>	Mezzanine Fabrication Detail
HS-004	<input type="checkbox"/>	Eaves Beam Fabrication Detail
HS-005	<input type="checkbox"/>	V.C.R Fabrication Detail
HS-006	<input type="checkbox"/>	V.C.R Assembly Detail
HS-007	<input type="checkbox"/>	Counter Form / Clamp Plate Order Form
HS-008	<input type="checkbox"/>	Adjustable / Tubular Apex Ties Fabrication Detail
HS-009	<input type="checkbox"/>	Sag Bar Order Form
HS-010	<input type="checkbox"/>	Diagonal Bracing Order Form
HS-011	<input type="checkbox"/>	Struts - 156 Fabrication Detail
HS-012	<input type="checkbox"/>	Struts - 176, 206, 238, 258, 309, & 359 Fabrication Detail
HS-013	<input type="checkbox"/>	Cleader Rail Fabrication Detail
HS-014	<input type="checkbox"/>	Cleats, Sleeves & Stays Order Form
HS-015	<input type="checkbox"/>	Eaves Hanger - 156 Fabrication Detail
HS-016	<input type="checkbox"/>	Eaves Hanger - 176, 206, 238, 258, 309 & 359 Fabrication Detail
HS-017	<input type="checkbox"/>	Eaves Tie - BW1 Fabrication Detail
HS-018	<input type="checkbox"/>	Eaves Tie - EG1 Fabrication Detail (For Roof Pitches < 15°)
HS-019	<input type="checkbox"/>	Eaves Tie - EG2 Fabrication Detail (For Roof Pitches > 15°)
HS-020	<input type="checkbox"/>	Top Hat Fabrication Detail
HS-021	<input type="checkbox"/>	W.C.P Fabrication Detail

HS-SET Hi-SPAN Standard Drawings - Complete Set

OVERALL LENGTH



SECTION REF	DIMENSIONS						
	A	B	C	D	E	F	G
Z 156	66	60	43	67	40	17	19
Z 176	66	60	43	87	40	17	19
Z 206	66	60	46	116	43	17	19
Z 238	83	75	44	146	40	17	19
Z 258	83	75	57	146	52	17	19
Z 309	94	86	57	196	52	20	22
Z 359	94	86	57	241	52	20	22



MARK:	No. RQD AS DRAWN:
MARK:	No. RQD OPP HAND:



Hi-SPAN Ltd.
 Ayton Road, Wymondham
 Norwich, Norfolk, NR18 0RD
 Telephone: 01953 609081
 Fax: 01953 607842
 Email: technical@hi-span.com
 Web: www.hi-span.com



DRG TITLE: PURLIN / RAIL FABRICATION DETAIL

- NOTES:
- 1: ALL HOLES 18 DIA. U.N.O
 - 2: COUNTERFORMED HOLES IN WEB MARKED 
 - 3: COUNTERFORMED HOLES IN FLG MARKED 

DRAWN BY: DATE:

CHKD BY: DATE:

DRG No: HS-001 Rev: ISSUE: 6th ISSUE

SECTION REF:

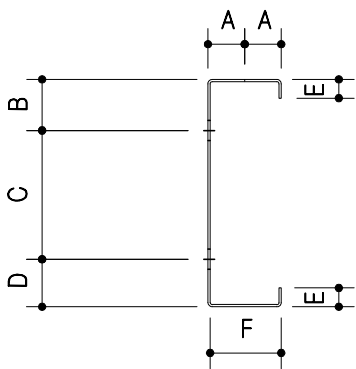
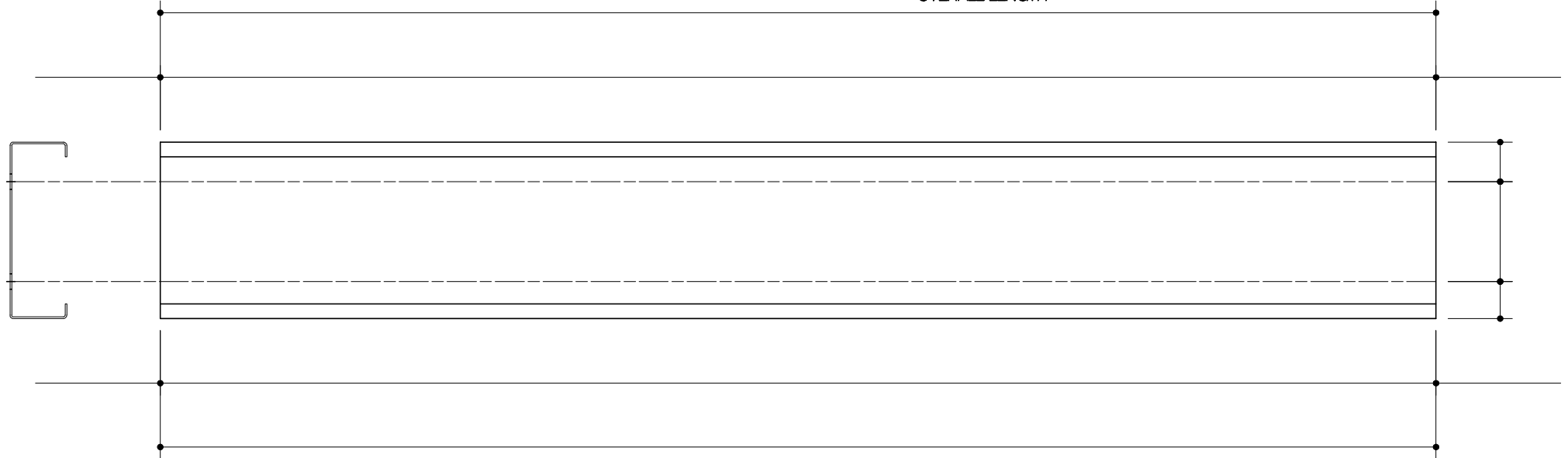
CUSTOMER:

ORDER REF:

SKETCH No:

HI-SPAN JOB No:

OVERALL LENGTH



SECTION REF	DIMENSIONS					
	A	B	C	D	E	F
C 156	33	42	67	41	15	66
C 176	33	42	87	41	15	66
C 206	33	45	116	44	15	66
C 238	40	42	146	42	18	80
C 258	40	55	146	54	18	80
C 309	45	55	196	54	21	90
C 359	45	55	241	54	21	90



MARK:	No. RQD AS DRAWN:
MARK:	No. RQD OPP HAND:



Hi-SPAN Ltd.
 Ayton Road, Wymondham
 Norwich, Norfolk, NR18 0RD
 Telephone: 01953 603081
 Fax: 01953 607842
 Email: technical@hi-span.com
 Web: www.hi-span.com



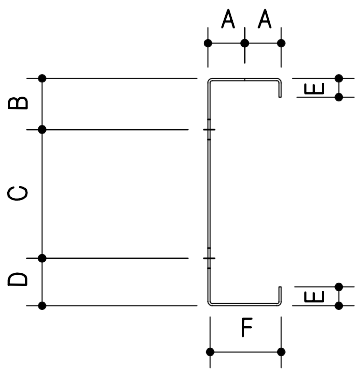
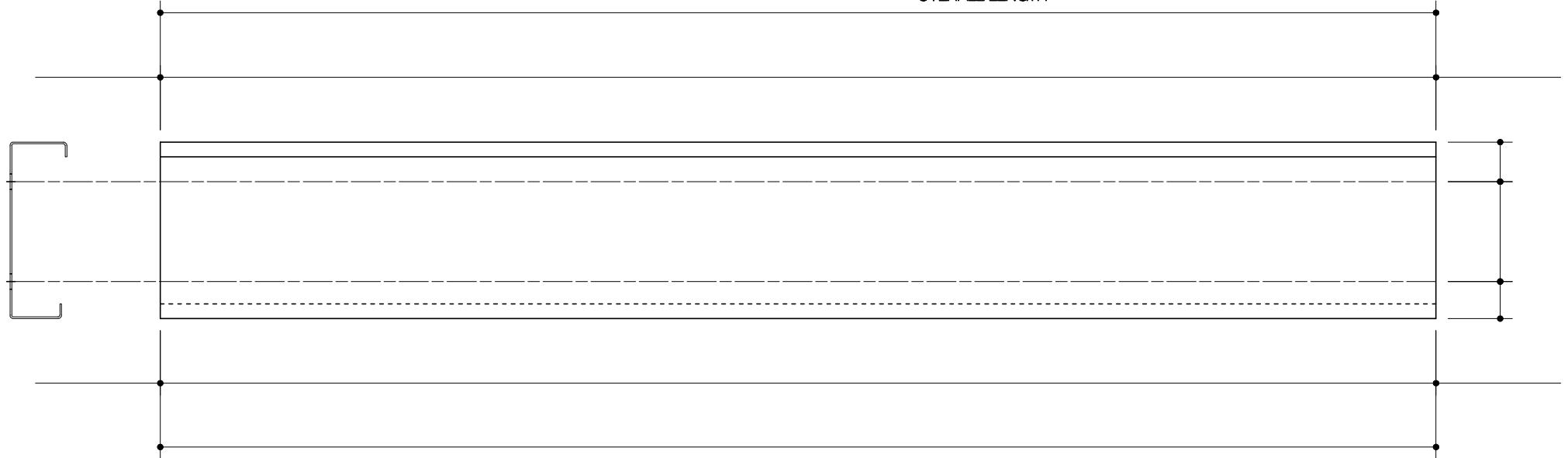
DRG TITLE: C-CHANNEL FABRICATION DETAIL

NOTES: 1: ALL HOLES 18 DIA. U.N.O
 2: COUNTERFORMED HOLES IN WEB MARKED 
 3: COUNTERFORMED HOLES IN FLG MARKED 

DRAWN BY:	DATE:
CHK'D BY:	DATE:
DRG No: HS-002	Rev: ISSUE: 6th ISSUE
SECTION REF:	

CUSTOMER:
ORDER REF:
SKETCH No:
HI-SPAN JOB No:

OVERALL LENGTH



SECTION REF	DIMENSIONS					
	A	B	C	D	E	F
C 127	33	30	67	30	15	66
C 156	33	42	67	41	15	66
C 176	33	42	87	41	15	66
C 206	33	45	116	44	15	66
C 220	33	52	116	52	15	66
C 270	33	62	146	62	15	66
C 290	37.5	47	196	47	15	75

MARK:	No. RQD AS DRAWN:
MARK:	No. RQD OPP HAND:





Hi-SPAN Ltd.
 Ayton Road, Wymondham
 Norwich, Norfolk, NR18 0RD
 Telephone: 01953 603081
 Fax: 01953 607842
 Email: technical@hi-span.com
 Web: www.hi-span.com



DRG TITLE: MEZZANINE CHANNEL FABRICATION DETAIL

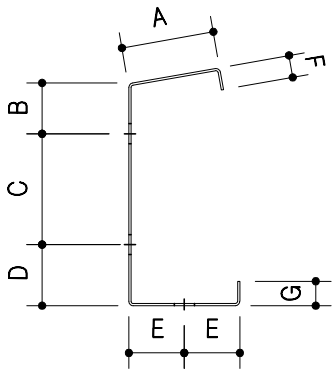
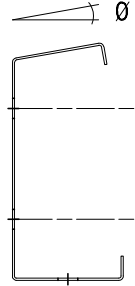
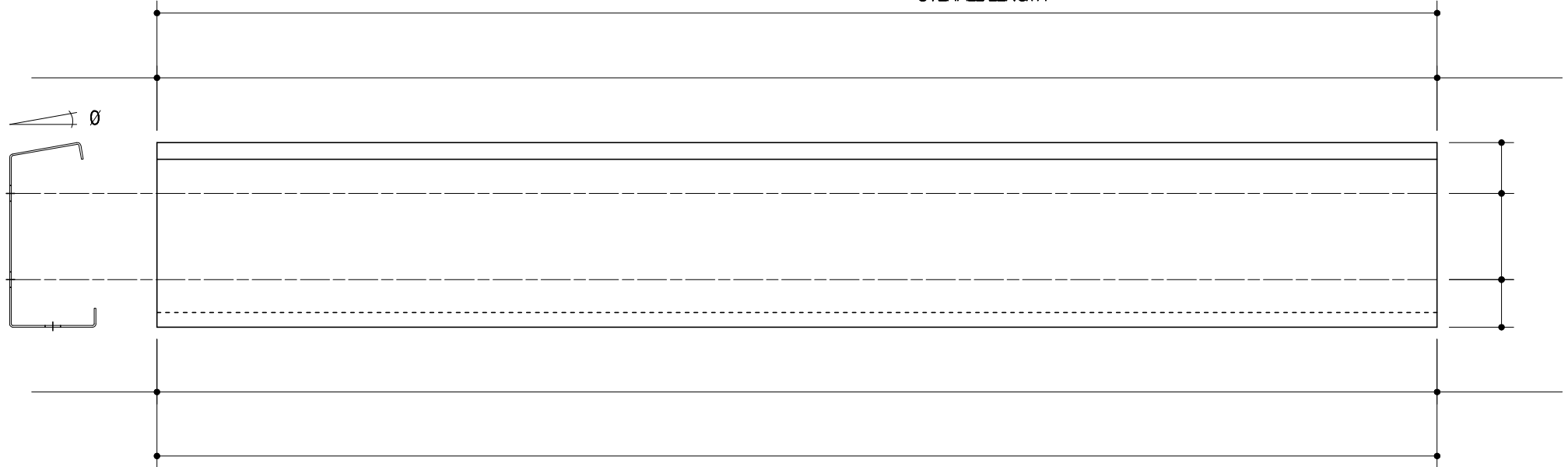
NOTES:

- 1: ALL HOLES 18 DIA. U.N.O
- 2: COUNTERFORMED HOLES IN WEB MARKED 
- 3: COUNTERFORMED HOLES IN FLG MARKED 

DRAWN BY:	DATE:
CHK'D BY:	DATE:
DRG No: HS-003	Rev: ISSUE: 6th ISSUE
SECTION REF:	

CUSTOMER:
ORDER REF:
SKETCH No:
HI-SPAN JOB No:

OVERALL LENGTH



SECTION REF	DIMENSIONS						
	A	B	C	D	E	F	G
E 170	75	42	84	44	50	16	20
E 200	83	45	100	55	50	20	22
E 240	83	69	116	55	50	20	22
E 280	100	79	146	55	50	20	22

PLEASE INDICATE PITCH RQ'D - 0°, 5°, 10°, 15°, 22.5°, 30°

MARK: No. RQD AS DRAWN:



MARK: No. RQD OPP HAND:



Hi-SPAN Ltd.
 Ayton Road, Wymondham
 Norwich, Norfolk, NR18 0RD
 Telephone: 01953 603081
 Fax: 01953 607842
 Email: technical@hi-span.com
 Web: www.hi-span.com



DRG TITLE: EAVES BEAM FABRICATION DETAIL

NOTES: 1: ALL HOLES 18 DIA. U.N.O
 2: COUNTERFORMED HOLES IN WEB MARKED 
 3: COUNTERFORMED HOLES IN FLG MARKED 

DRAWN BY: DATE:

CHK'D BY: DATE:

DRG No: HS-004 Rev: ISSUE: 6th ISSUE

SECTION REF:

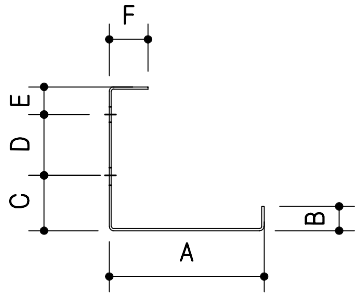
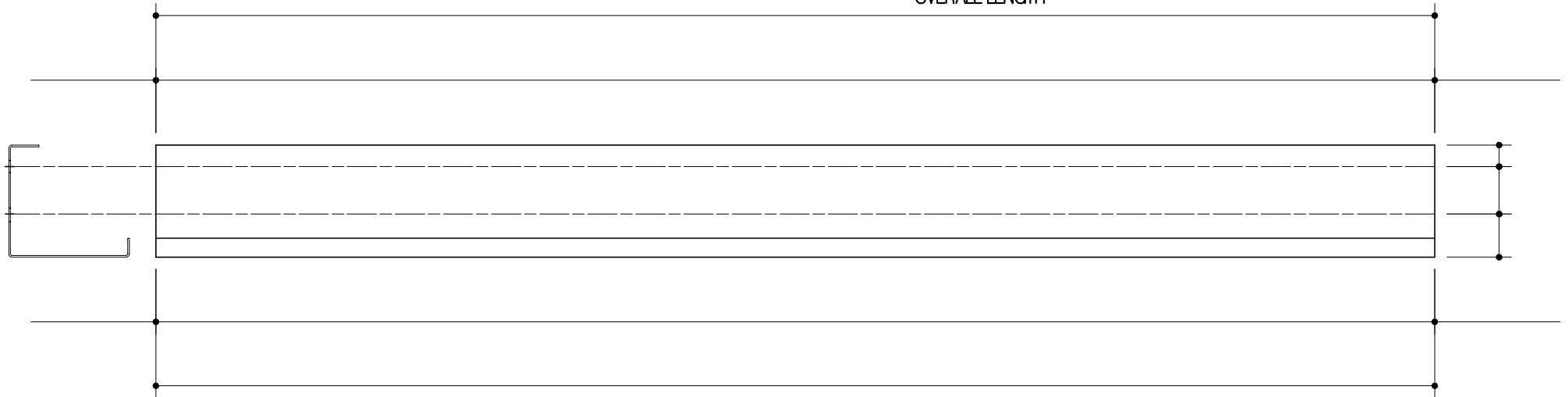
CUSTOMER:

ORDER REF:

SKETCH No:

HI-SPAN JOB No:

OVERALL LENGTH



SECTION REF	DIMENSIONS					
	A	B	C	D	E	F
VCR	140	22	50	55	25	35

MARK:	No. RQD AS DRAWN:
MARK:	No. RQD OPP HAND:





Hi-SPAN Ltd.
 Ayton Road, Wymondham
 Norwich, Norfolk, NR18 0RD
 Telephone: 01953 609081
 Fax: 01953 607842
 Email: technical@hi-span.com
 Web: www.hi-span.com



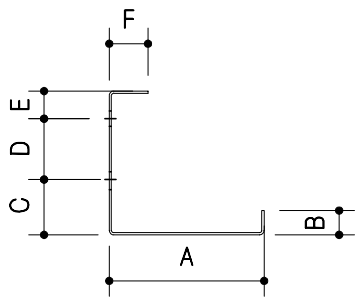
DRG TITLE: VCR FABRICATION DETAIL

NOTES:

- 1: ALL HOLES 14 DIA. U.N.O
- 2: COUNTERFORMED HOLES IN WEB MARKED 
- 3: COUNTERFORMED HOLES IN FLG MARKED 

DRAWN BY:	DATE:
CHK'D BY:	DATE:
DRG No: HS-005	Rev: ISSUE: 6th ISSUE
SECTION REF:	

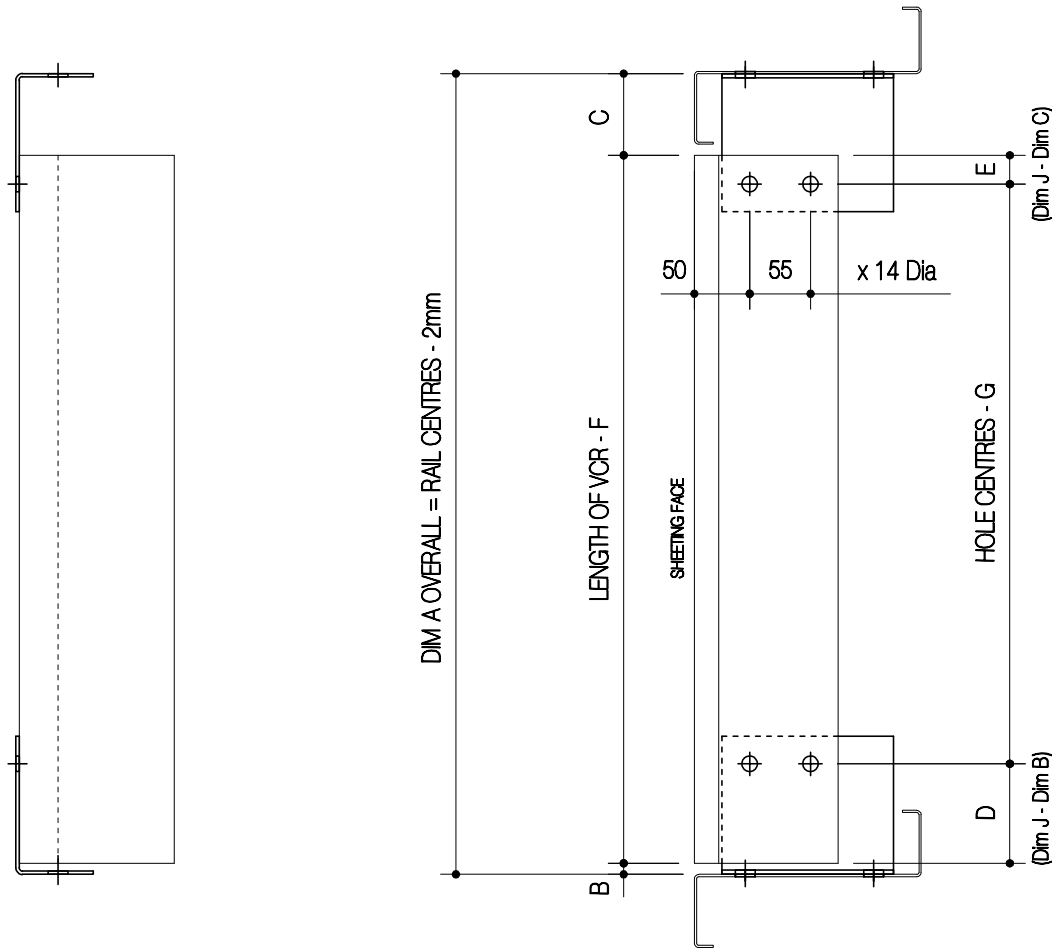
CUSTOMER:
ORDER REF:
SKETCH No:
Hi-SPAN JOB No:



SECTION	DIMENSIONS					
REF	A	B	C	D	E	F
VCR	140	22	50	55	25	35

VCR SECTIONS								
MARK	No. OFF	A	B	C	D	E	F	G

DIMENSIONS (B, C, D, E, F, G) VARY ACCORDINGLY TO COLD ROLLED SECTION SIZE AND ORIENTATION (5mm, OR FLANGE DEPTH +5MM)



VCR CLEATS			
CLEAT	J	No. OFF	(X) No. OFF
VR15	100		
VR17	100		
VR20	100		
VR23	120		
VR25	120		
VR30	140		
VR35	140		

1 No. VCR CLEAT REQUIRED EACH END
1 SUFFIXED (X) - OPPOSITE HAND



Hi-SPAN Ltd.
Ayton Road, Wymondham
Norwich, Norfolk, NR18 0RD

Telephone: 01953 603081
Fax: 01953 607842
Email: technical@hi-span.com
Web: www.hi-span.com



DRG TITLE: VCR ASSEMBLY DETAILS

NOTES:

DRAWN BY:

DATE:

CHK'D BY:

DATE:

DRG No: HS-006

Rev:

ISSUE: 6th ISSUE

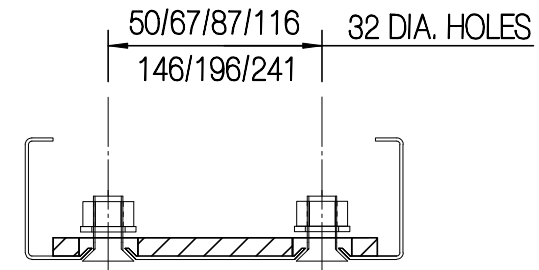
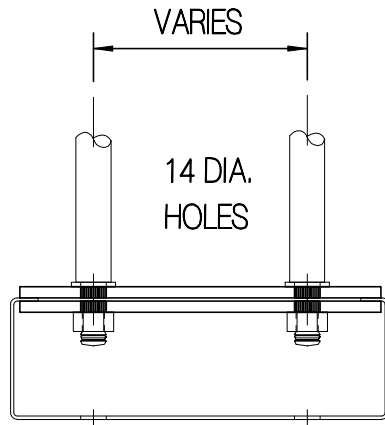
SECTION REF:

CUSTOMER:

ORDER REF:

SKETCH No:

Hi-SPAN JOB No:



STANDARD CLAMP PLATES

CP 127	No. OFF
CP 156	No. OFF
CP 176	No. OFF
CP 206	No. OFF
CP 220	No. OFF
CP 238	No. OFF
CP 258	No. OFF
CP 270	No. OFF
CP 290	No. OFF
CP 309	No. OFF
CP 359	No. OFF

STANDARD COUNTER FORMED PLATES

CFP 50	No. OFF
CFP 67	No. OFF
CFP 87	No. OFF
CFP 116	No. OFF
CFP 146	No. OFF
CFP 196	No. OFF
CFP 241	No. OFF



Hi-SPAN Ltd.
 Ayton Road, Wymondham
 Norwich, Norfolk, NR18 0RD
 Telephone: 01953 603081
 Fax: 01953 607842
 Email: technical@hi-span.com
 Web: www.hi-span.com



DRG TITLE: COUNTER FORM / CLAMP PLATE ORDER FORM

NOTES:

DRAWN BY:

DATE:

CUSTOMER:

CHK'D BY:

DATE:

ORDER REF:

DRG No: HS-007

Rev:

ISSUE: 6th ISSUE

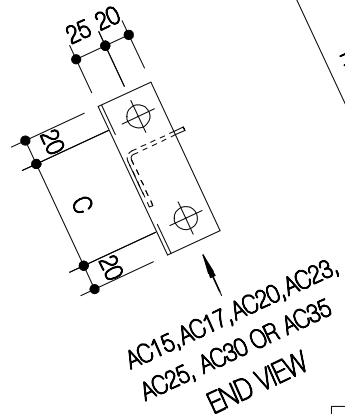
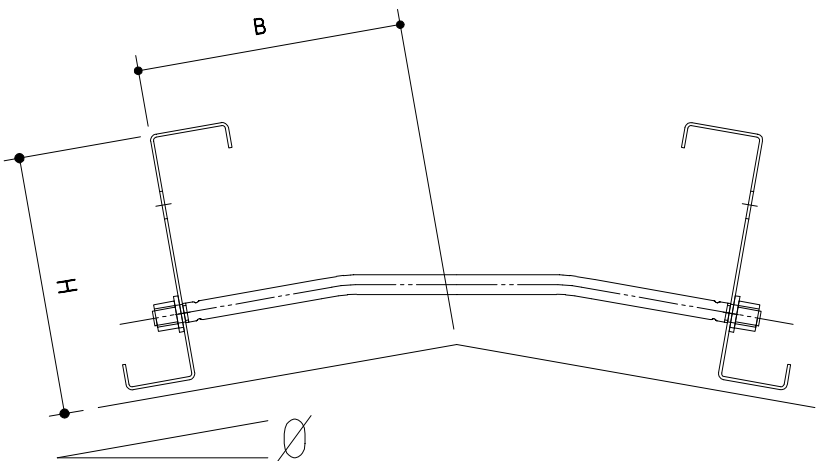
SKETCH No:

SECTION REF:

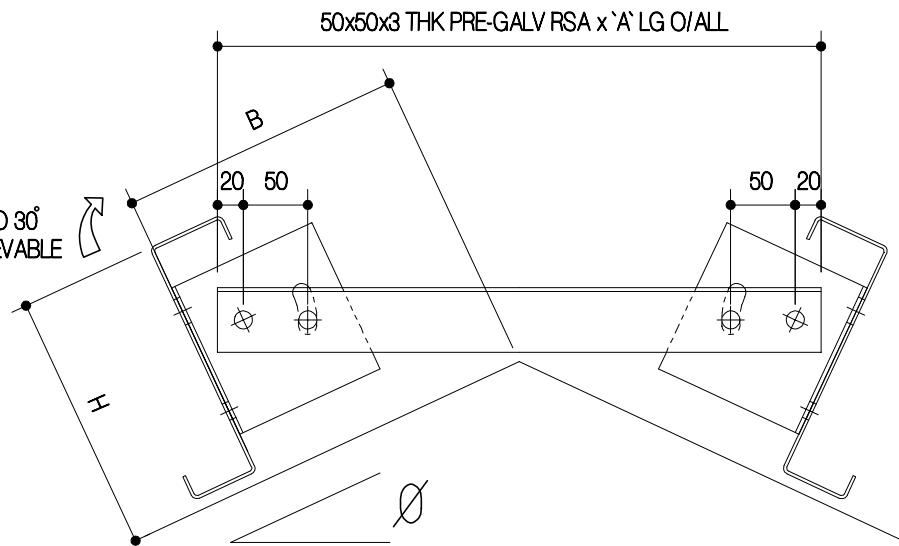
Hi-SPAN JOB No:

CLT	No OFF	OPP HAND

NOTE: FOR EVERY APEX TIE
1 No. AS DRN CLT AND 1 No. OPP HAND CLT ARE REQ'D



Ø TO 30°
ACHIEVABLE



TUBULAR APEX TIE					
MARK	No. OFF	'B'	'H'	Ø	HSL

NOTE: FOR ROOF SLOPES GREATER THAN 15 TUBE FIXED TO TOP HOLES
NOTE: FOR SLOPES OF 0 TO 5 HI-SPAN SUPPLY A STRAIGHT TUBE

ADJUSTABLE APEX TIE						
MARK	No. OFF	'A'	'B'	'C'	'H'	Ø



Hi-SPAN Ltd.
Ayton Road, Wymondham
Norwich, Norfolk, NR18 0RD
Telephone: 01953 603061
Fax: 01953 607842
Email: technical@hi-span.com
Web: www.hi-span.com



DRG TITLE: ADJUSTABLE / TUBULAR APEX TIES FAB. DETAIL

NOTES:

DRAWN BY:

DATE:

CHK'D BY:

DATE:

DRG No: HS-008

Rev:

ISSUE: 6th ISSUE

SECTION REF:

CUSTOMER:

ORDER REF:


SKETCH No:

Hi-SPAN JOB No:

19mm ROD



TUBULAR SAG BARS - SCREW FIX								
MARK	No. OFF						PURLIN CENTRES	RAIL CENTRES
	20/20	20/32	20/100	32/32	32/100	100/100		



Hi-SPAN Ltd.
 Ayton Road, Wymondham
 Norwich, Norfolk, NR18 0RD

Telephone: 01953 603081
 Fax: 01953 607842
 Email: technical@hi-span.com
 Web: www.hi-span.com



DRG TITLE: SAG BARS ORDER FORM

NOTES:

DRAWN BY: _____ DATE: _____

CHK'D BY: _____ DATE: _____

DRG No: HS-009 Rev: _____ ISSUE: 6th ISSUE

SECTION REF: _____

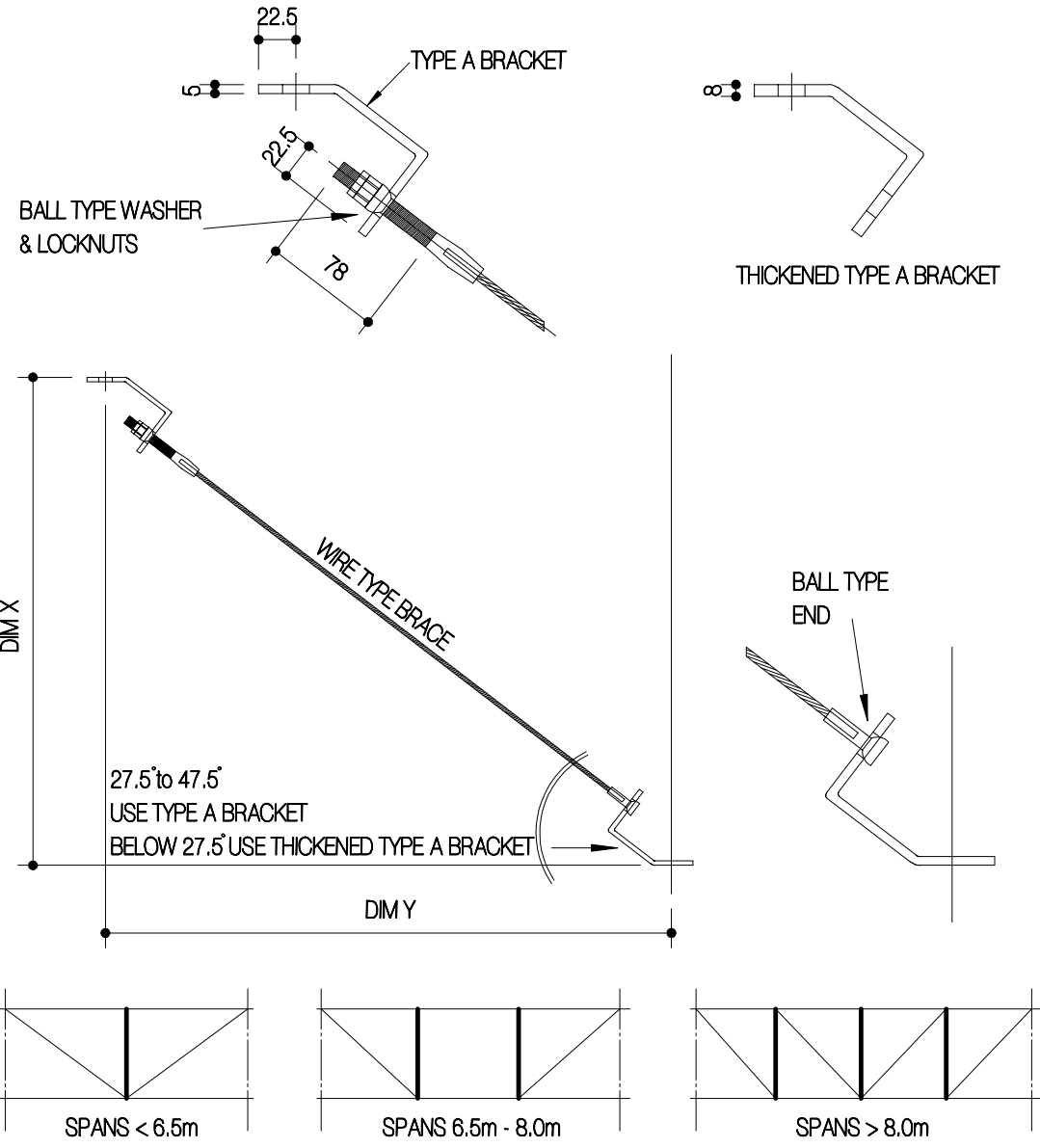
CUSTOMER: _____

ORDER REF: _____

SKETCH No: _____

Hi-SPAN JOB No: _____

DIAGONAL TIE WIRES					
MARK	No. OFF	DIM Y	DIM X	HSL	PLEASE TICK FOR THICKENED BRACKETS
Hi-Span Will Supply 2 Bracing Brackets per Diagonal Rope Ordered	NOTE: BRACING BRACKETS ARE MANUFACTURED TO SUIT STANDARD SLOPES OF 37.5° WHEN USING THE BALL TYPE WASHER AS PER THE DETAIL, THE ANGLE CAN BE DECREASED TO A MINIMUM OF 27.5° OR INCREASED TO A MAXIMUM OF 47.5°. (FOR ANGLES OUTSIDE THIS RANGE PLEASE USE THE THICKENED BRACKETS)				



Hi-SPAN Ltd.
Ayton Road, Wymondham
Norwich, Norfolk, NR18 0RD

Telephone: 01953 603081
Fax: 01953 607842
Email: technical@hi-span.com
Web: www.hi-span.com

DRG TITLE: DIAGONAL BRACING ORDER FORM

NOTES:

DRAWN BY: _____ DATE: _____

CHK'D BY: _____ DATE: _____

DRG No: HS-010 Rev: _____ ISSUE: 6th ISSUE

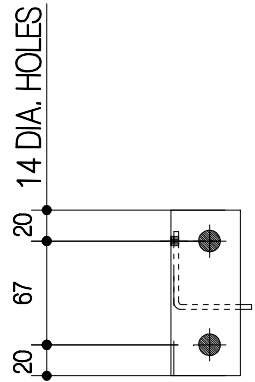
SECTION REF: _____

CUSTOMER: _____

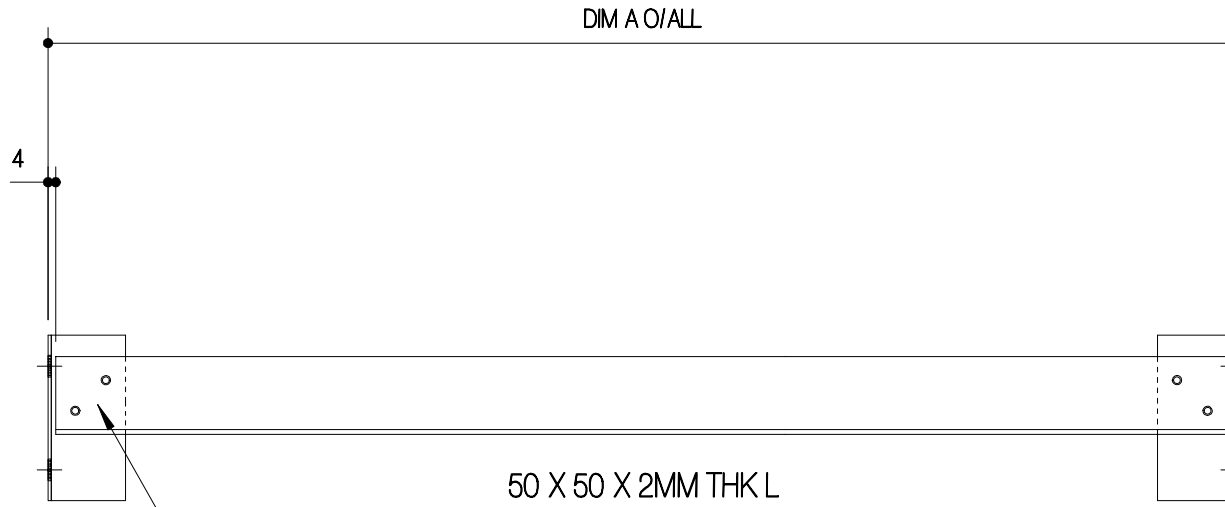
ORDER REF: _____

SKETCH No: _____

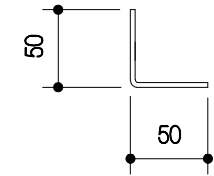
Hi-SPAN JOB No: _____



END VIEW




2 No. RIVETS




SECTION PROFILE

RIGID-FIX STRUTS		
No. OFF	DIM 'A'	MARK



Hi-SPAN Ltd.
Ayton Road, Wymondham
Norwich, Norfolk, NR18 0RD
Telephone: 01953 603081
Fax: 01953 607842
Email: technical@hi-span.com
Web: www.hi-span.com



DRG TITLE: STRUTS - 156 FAB. DETAILS

NOTES:

DRAWN BY: DATE:

CHK'D BY: DATE:

DRG No: HS-011 Rev: ISSUE: 6th ISSUE

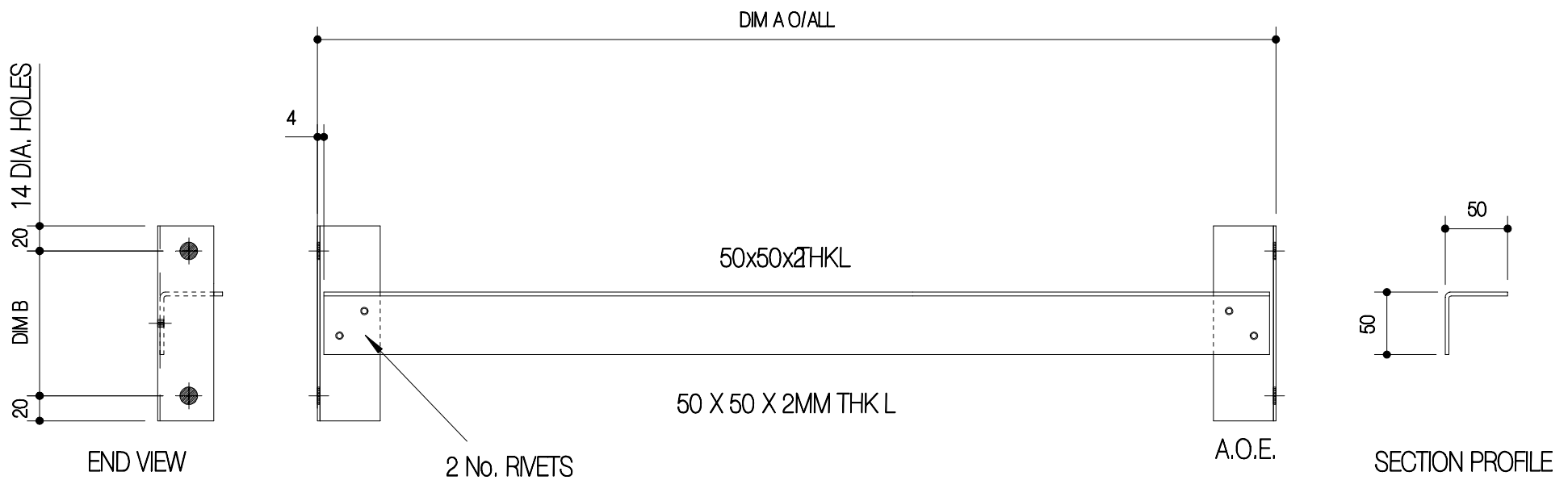
SECTION REF:

CUSTOMER:

ORDER REF:

SKETCH No:

Hi-SPAN JOB No:




N.B. DIM 'B'
 FOR SECTION 356 = 241
 FOR SECTION 309 = 196
 FOR SECTION 258 = 146
 FOR SECTION 238 = 146
 FOR SECTION 206 = 116
 FOR SECTION 176 = 87

RIGID-FIX STRUTS			
No. OFF	DIM 'A'	DIM 'B'	MARK



Hi-SPAN Ltd.
 Ayton Road, Wymondham
 Norwich, Norfolk, NR18 0RD
 Telephone: 01953 603061
 Fax: 01953 607842
 Email: technical@hi-span.com
 Web: www.hi-span.com



DRG TITLE: STRUTS - 176, 206, 238, 258, 309 & 359 FAB. DETAIL

NOTES:

DRAWN BY: DATE:

CHK'D BY: DATE:

DRG No: HS-012 Rev: ISSUE: 6th ISSUE

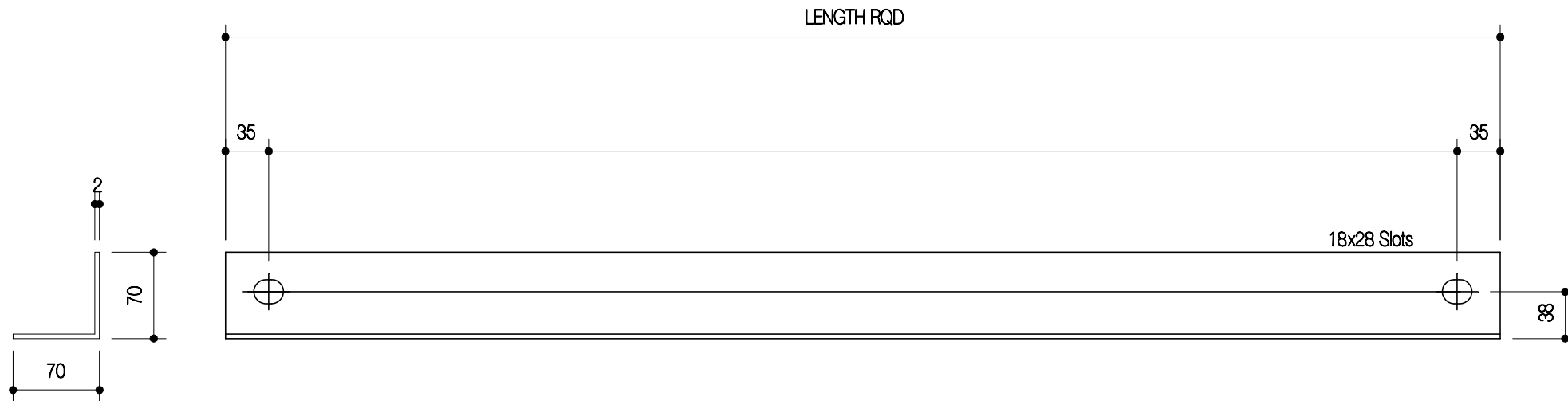
SECTION REF:

CUSTOMER:

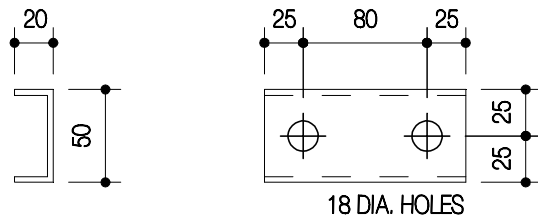
ORDER REF:

SKETCH No:

Hi-SPAN JOB No:



CLEADER RAIL JOINTING PIECE (REQUIRED EVERY 3m MAX.)



MARK:	No. RQD AS DRAWN:
MARK:	No. RQD OPP HAND:
MARK:	No. RQD JOINT PIECE:



Hi-SPAN Ltd.
 Ayton Road, Wymondham
 Norwich, Norfolk, NR18 0RD
 Telephone: 01953 603081
 Fax: 01953 607842
 Email: technical@hi-span.com
 Web: www.hi-span.com



DRG TITLE: CLEADER RAIL FABRICATION DETAIL

NOTES: 1: STANDARD LENGTH SUPPLIED 3.050 METRES (4.00M MAX.)

DRAWN BY:

DATE:

CUSTOMER:

CHK'D BY:

DATE:

ORDER REF:

DRG No: HS-013

Rev:

ISSUE: 6th ISSUE

SKETCH No:

SECTION REF:

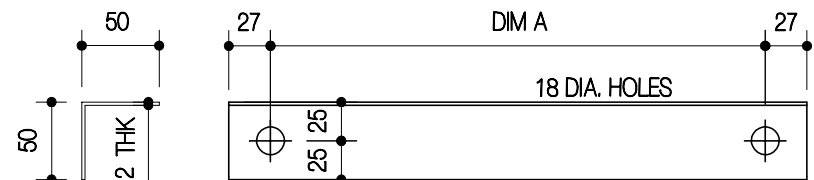
Hi-SPAN JOB No:

STANDARD CLEATS	CLEAT REF.	
BOLT ON PURLIN CLEAT 6mm	C 15	No. OFF
BOLT ON PURLIN CLEAT 6mm	C 17	No. OFF
BOLT ON PURLIN CLEAT 8mm	C 20	No. OFF
BOLT ON PURLIN CLEAT 8mm	C 23	No. OFF
BOLT ON PURLIN CLEAT 8mm	C 25	No. OFF
BOLT ON PURLIN CLEAT 10mm	C 30	No. OFF
BOLT ON PURLIN CLEAT 10mm	C 35	No. OFF
WELD ON PURLIN CLEAT 6mm	PC 15	No. OFF
WELD ON PURLIN CLEAT 6mm	PC 17	No. OFF
WELD ON PURLIN CLEAT 8mm	PC 20	No. OFF
WELD ON PURLIN CLEAT 8mm	PC 23	No. OFF
WELD ON PURLIN CLEAT 8mm	PC 25	No. OFF
WELD ON PURLIN CLEAT 10mm	PC 30	No. OFF
WELD ON PURLIN CLEAT 10mm	PC 35	No. OFF
CHANNEL TRIMMER CLEAT 3mm	TC 50	No. OFF
CHANNEL TRIMMER CLEAT 3mm	TC 67	No. OFF
CHANNEL TRIMMER CLEAT 3mm	TC 87	No. OFF
CHANNEL TRIMMER CLEAT 3mm	TC 116	No. OFF
CHANNEL TRIMMER CLEAT 3mm	TC 146	No. OFF
CHANNEL TRIMMER CLEAT 3mm	TC 196	No. OFF
CHANNEL TRIMMER CLEAT 3mm	TC 241	No. OFF
MEZZANINE CHANNEL CLEAT 5mm	MFB 50	No. OFF
MEZZANINE CHANNEL CLEAT 5mm	MFB 67	No. OFF
MEZZANINE CHANNEL CLEAT 5mm	MFB 87	No. OFF
MEZZANINE CHANNEL CLEAT 5mm	MFB 116	No. OFF
MEZZANINE CHANNEL CLEAT 5mm	MFB 146	No. OFF
MEZZANINE CHANNEL CLEAT 5mm	MFB 196	No. OFF
MEZZANINE CHANNEL CLEAT 5mm	MFB 241	No. OFF
EAVES BEAM SINGLE CLEAT	ES 17	No. OFF
EAVES BEAM SINGLE CLEAT	ES 20	No. OFF
EAVES BEAM SINGLE CLEAT	ES 24	No. OFF
EAVES BEAM SINGLE CLEAT	ES 28	No. OFF
EAVES BEAM DOUBLE CLEAT	ED 17	No. OFF
EAVES BEAM DOUBLE CLEAT	ED 20	No. OFF
EAVES BEAM DOUBLE CLEAT	ED 24	No. OFF
EAVES BEAM DOUBLE CLEAT	ED 28	No. OFF
FB BRACKET	FB	No. OFF

STANDARD PURLIN SLEEVES		
Z 156 SLEEVE @ 584 LG	mmTHK	No. OFF
Z 176 SLEEVE @ 584 LG	mmTHK	No. OFF
Z 206 SLEEVE @ 734 LG	mmTHK	No. OFF
Z 238 SLEEVE @ 734 LG	mmTHK	No. OFF
Z 258 SLEEVE @ 934 LG	mmTHK	No. OFF
Z 309 SLEEVE @ 1334 LG	mmTHK	No. OFF
Z 359 SLEEVE @ 1524 LG	mmTHK	No. OFF

STANDARD CHANNEL SLEEVES		
CHANNELS < 1.8mm THK		
C 156 SLEEVE @ 584 LG 2.0mm THK		No. OFF
C 176 SLEEVE @ 584 LG 2.0mm THK		No. OFF
C 206 SLEEVE @ 734 LG 2.4mm THK		No. OFF
C 238 SLEEVE @ 734 LG 2.4mm THK		No. OFF
C 258 SLEEVE @ 934 LG 2.4mm THK		No. OFF
CHANNELS > 1.8mm THK		
C 156 SLEEVE @ 584 LG 5.0mm THK		No. OFF
C 176 SLEEVE @ 584 LG 5.0mm THK		No. OFF
C 206 SLEEVE @ 734 LG 5.0mm THK		No. OFF
C 238 SLEEVE @ 734 LG 5.0mm THK		No. OFF
C 258 SLEEVE @ 934 LG 5.0mm THK		No. OFF
C 309 SLEEVE @ 1334 LG 5.0mm THK		No. OFF
C 350 SLEEVE @ 1524 LG 5.0mm THK		No. OFF

STANDARD TOP HAT SLEEVES		
THSL70 @ 210 LG		No. OFF
THSL140 @ 210 LG		No. OFF



RAFTER / STANCHION STAYS			
MARK	No. OFF	DIM A	HSL



Hi-SPAN Ltd.
 Ayton Road, Wymondham
 Norwich, Norfolk, NR18 0RD
 Telephone: 01953 603081
 Fax: 01953 607842
 Email: technical@hi-span.com
 Web: www.hi-span.com



DRG TITLE: CLEATS, SLEEVES, STAYS - ORDER FORM

NOTES: 1: FOR FIREWALL SLEEVES PREFIX 'FW' 🗑️

DRAWN BY:

DATE:

CHK'D BY:

DATE:

DRG No: HS-014

Rev:

ISSUE: 6th ISSUE

SECTION REF:

CUSTOMER:

ORDER REF:

SKETCH No:

Hi-SPAN JOB No:

No. REQ'D	DIM 'A'	MARK

HI-SPAN EAVES BEAM
& STIFF. CLEAT

12 18 DIA HOLES

STANDARD TOP CLEAT RH2

2 No RIVETS

DIM A O/ALL LENGTH

A

SHEETING FACE

A

50 X 50 X 2mm THK L

2 No RIVETS

STANDARD BOTTOM CLEAT ST15

SECTION AA

20 67 20 14 DIA HOLES



Hi-SPAN Ltd.
Ayton Road, Wymondham
Norwich, Norfolk, NR18 0RD
Telephone: 01953 603081
Fax: 01953 607842
Email: technical@hi-span.com
Web: www.hi-span.com



DRG TITLE: EAVES HANGER - 156 FABRICATION DETAILS

NOTES: 1: FOR FURTHER INFORMATION PLEASE SEE HSP-045

DRAWN BY:

DATE:

CUSTOMER:

CHK'D BY:

DATE:

ORDER REF:

DRG No: HS-015

Rev:

ISSUE: 6th ISSUE

SKETCH No:

SECTION REF:

Hi-SPAN JOB No:

HI-SPAN EAVES BEAM
& STIFF. CLEAT

VARIES 18 DIA HOLES

STANDARD TOP CLEAT RH1

2 No RIVETS

VARIES

A

A

SECTION AA

DIM A O/ALL LENGTH

SHEETING FACE

50x50x7HK L

2 No RIVETS

STD. BTM. CLEAT ST17 FOR SECTIONS 176
 STD. BTM. CLEAT ST20 FOR SECTIONS 206
 STD. BTM. CLEAT ST23 FOR SECTIONS 238
 STD. BTM. CLEAT ST25 FOR SECTIONS 258
 STD. BTM. CLEAT ST30 FOR SECTIONS 309
 STD. BTM. CLEAT ST35 FOR SECTIONS 359

20 VARIES 20 14 DIA HOLES

No. REQ'D	DIM 'A'	BTM CLEAT	MARK



Hi-SPAN Ltd.
 Ayton Road, Wymondham
 Norwich, Norfolk, NR18 0RD
 Telephone: 01953 603081
 Fax: 01953 607842
 Email: technical@hi-span.com
 Web: www.hi-span.com



DRG TITLE: EAVES HANGER - 176,206,238,258,309,359,FABRICATION DETAIL

NOTES: 1: FOR FURTHER INFORMATION PLEASE SEE HSP-045

DRAWN BY:

DATE:

CUSTOMER:

CHK'D BY:

DATE:

ORDER REF:

DRG No: HS-016

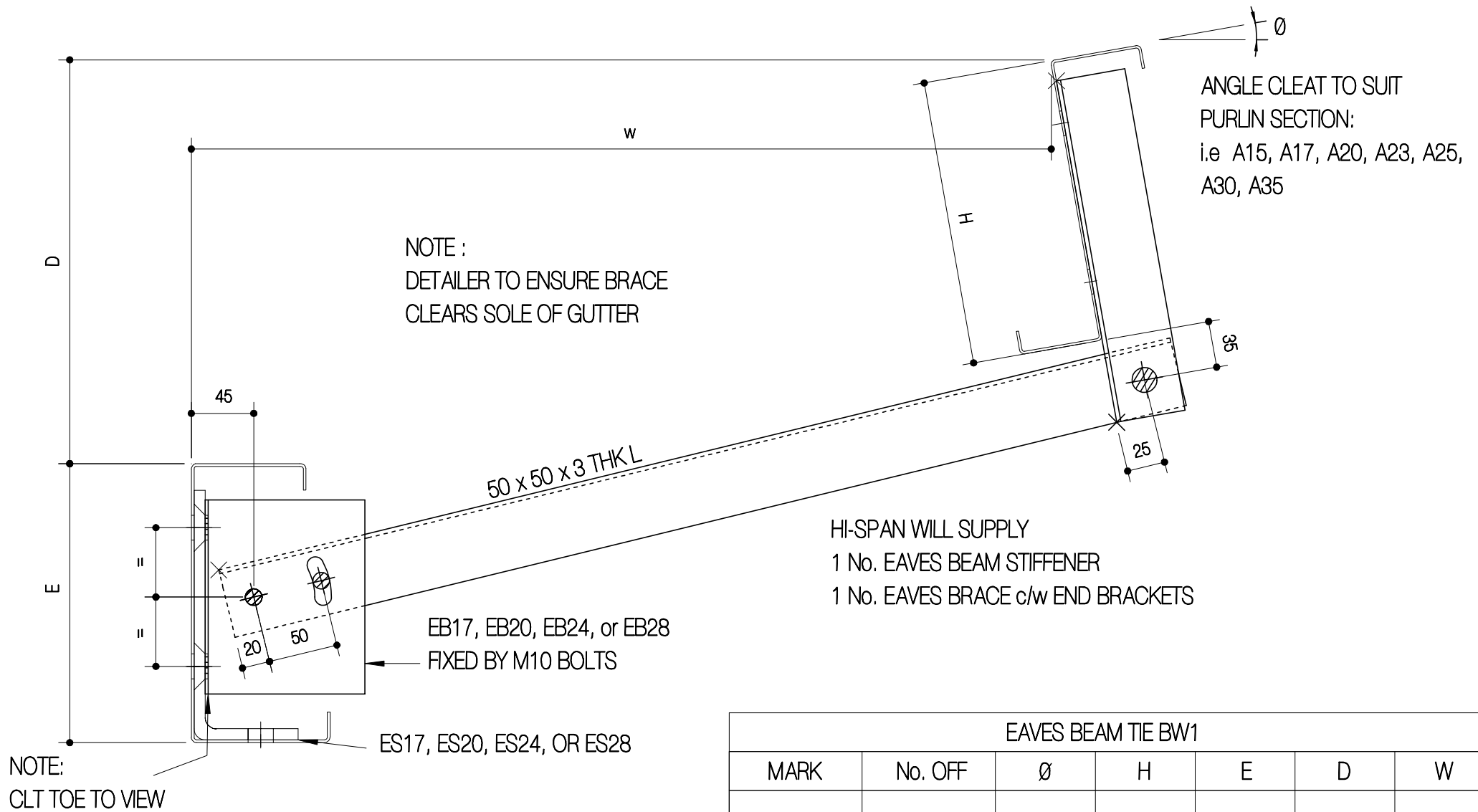
Rev:

ISSUE: 6th ISSUE

SKETCH No:

SECTION REF:

Hi-SPAN JOB No:



Hi-SPAN Ltd.
Ayton Road, Wymondham
Norwich, Norfolk, NR18 0RD
Telephone: 01953 603081
Fax: 01953 607842
Email: technical@hi-span.com
Web: www.hi-span.com



DRG TITLE: EAVES TIE - BW1 FABRICATION DETAIL

NOTES:

DRAWN BY:

DATE:

CUSTOMER:

CHK'D BY:

DATE:

ORDER REF:

DRG No: HS-017

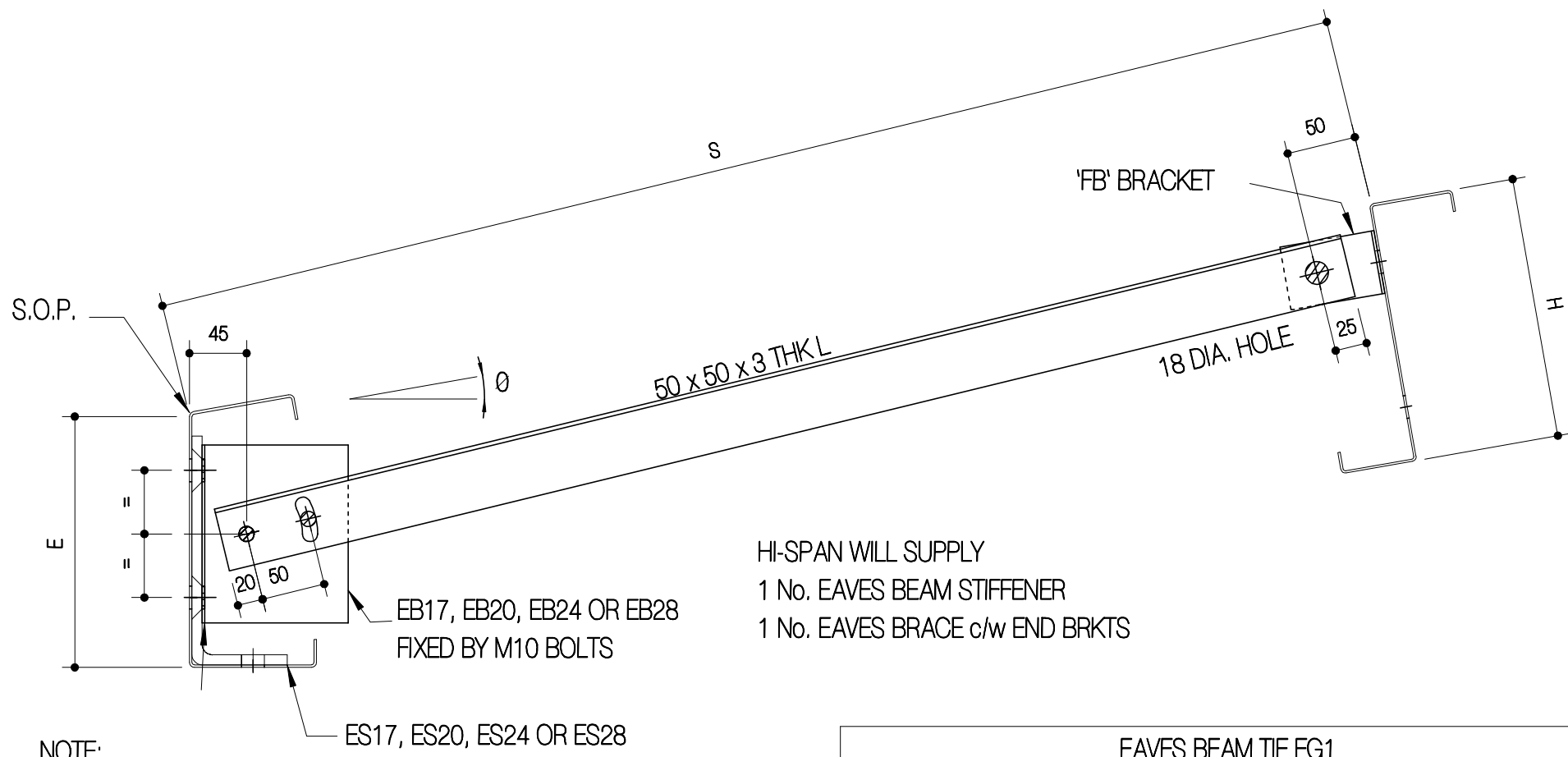
Rev:

ISSUE: 6th ISSUE

SKETCH No:

SECTION REF:


Hi-SPAN JOB No:




HI-SPAN WILL SUPPLY
 1 No. EAVES BEAM STIFFENER
 1 No. EAVES BRACE c/w END BRKTS

NOTE:
 CLT TOE TO VIEW

EAVES BEAM TIE EG1					
MARK	No. OFF	Ø	S	H	E



Hi-SPAN Ltd.
 Ayton Road, Wymondham
 Norwich, Norfolk, NR18 0RD
 Telephone: 01953 603061
 Fax: 01953 607842
 Email: technical@hi-span.com
 Web: www.hi-span.com

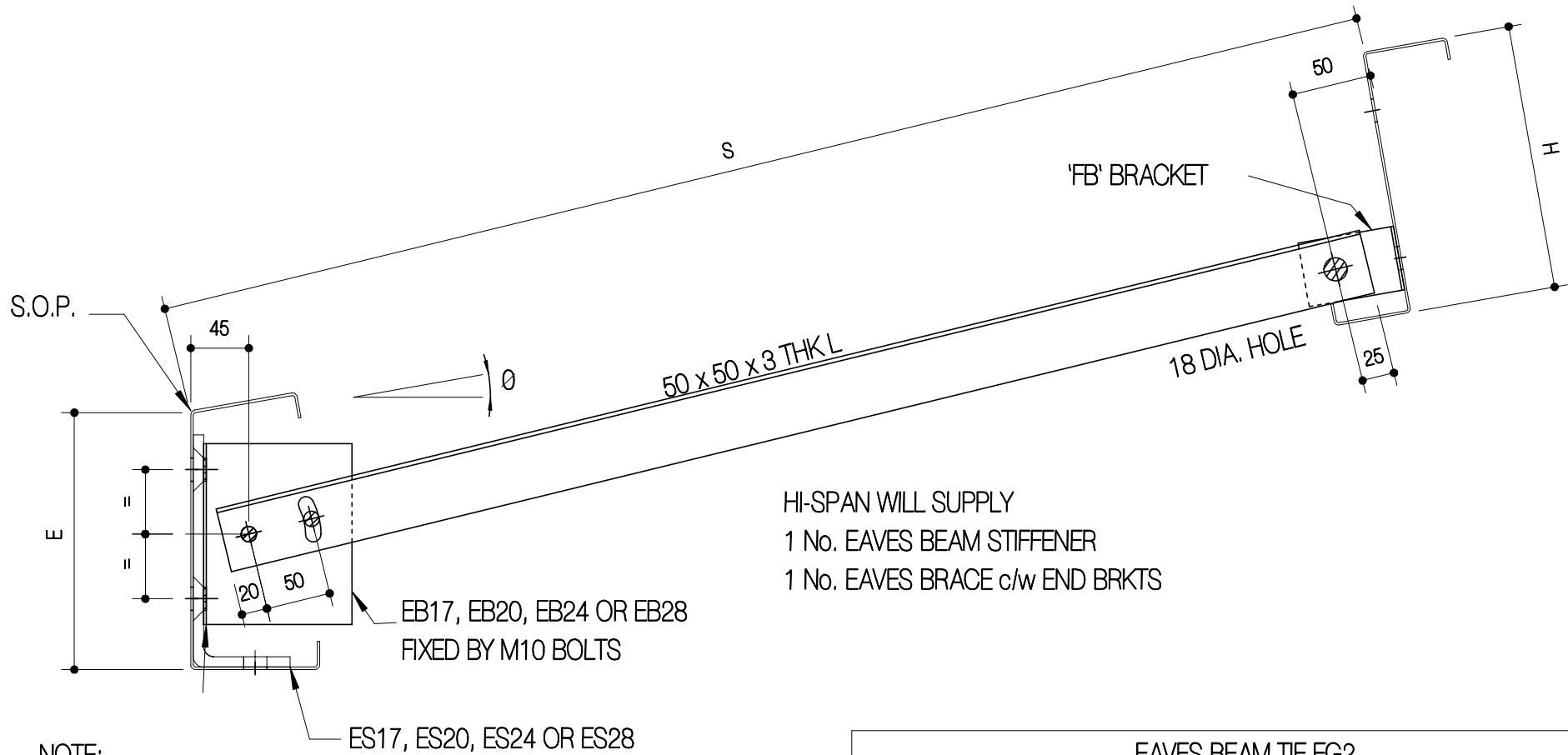


DRG TITLE: EAVES TIE - EG1 FABRICATION DETAIL

NOTES: 1: FOR ROOF PITCHES < 15°

DRAWN BY: DATE:
 CHK'D BY: DATE:
 DRG No: HS-018 Rev: ISSUE: 6th ISSUE
 SECTION REF:

CUSTOMER:
 ORDER REF:
 SKETCH No:
 Hi-SPAN JOB No:



HI-SPAN WILL SUPPLY
 1 No. EAVES BEAM STIFFENER
 1 No. EAVES BRACE c/w END BRKTS


NOTE:
 CLT TOE TO VIEW

EAVES BEAM TIE EG2					
MARK	No. OFF	Ø	S	H	E



Hi-SPAN Ltd.
 Ayton Road, Wymondham
 Norwich, Norfolk, NR18 0RD

Telephone: 01953 603061
 Fax: 01953 607842
 Email: technical@hi-span.com
 Web: www.hi-span.com



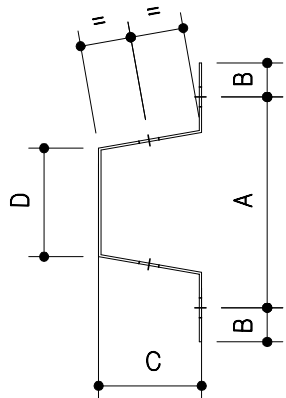
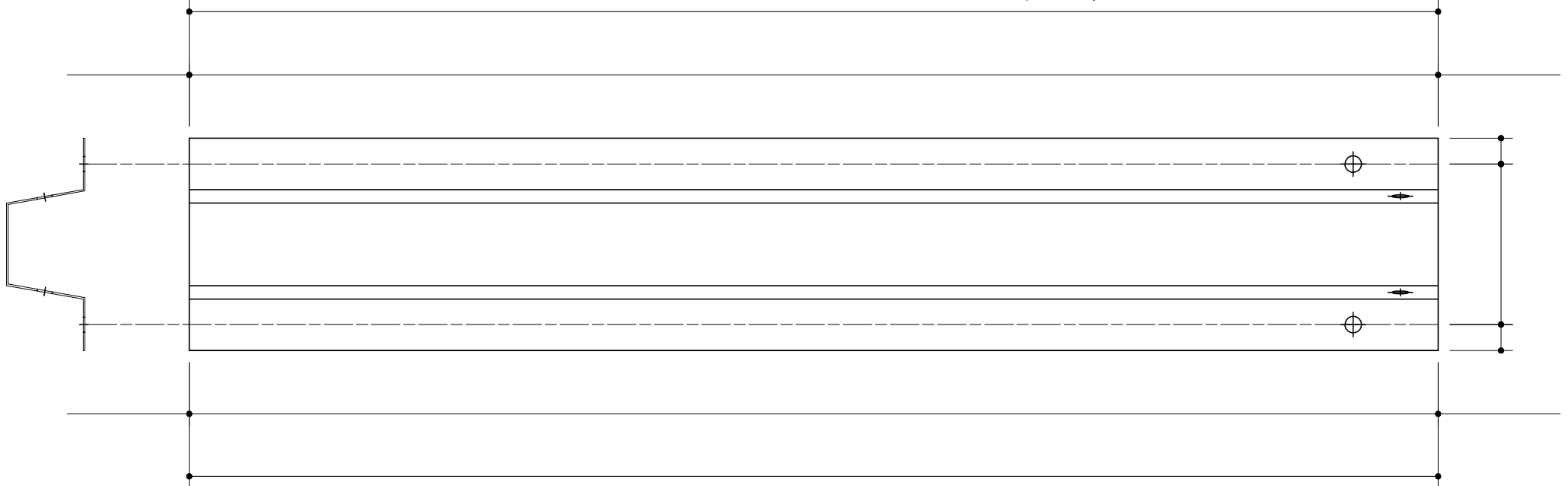
DRG TITLE: EAVES TIE - EG2 FABRICATION DETAIL

NOTES: 1: FOR ROOF PITCHES > 15°

DRAWN BY: DATE:
 CHK'D BY: DATE:
 DRG No: HS-019 Rev: ISSUE: 6th ISSUE
 SECTION REF:

CUSTOMER:
 ORDER REF:
 SKETCH No:
 Hi-SPAN JOB No:

OVERALL LENGTH (4m MAX.)



SECTION REF	DIMENSIONS			
	A	B	C	D
TH 70	130	22	65	70
TH140	200	25	65	140

MARK:	No. RQD AS DRAWN:
MARK:	No. RQD OPP HAND:



Hi-SPAN Ltd.
 Ayton Road, Wymondham
 Norwich, Norfolk, NR18 0RD
 Telephone: 01953 603081
 Fax: 01953 607842
 Email: technical@hi-span.com
 Web: www.hi-span.com

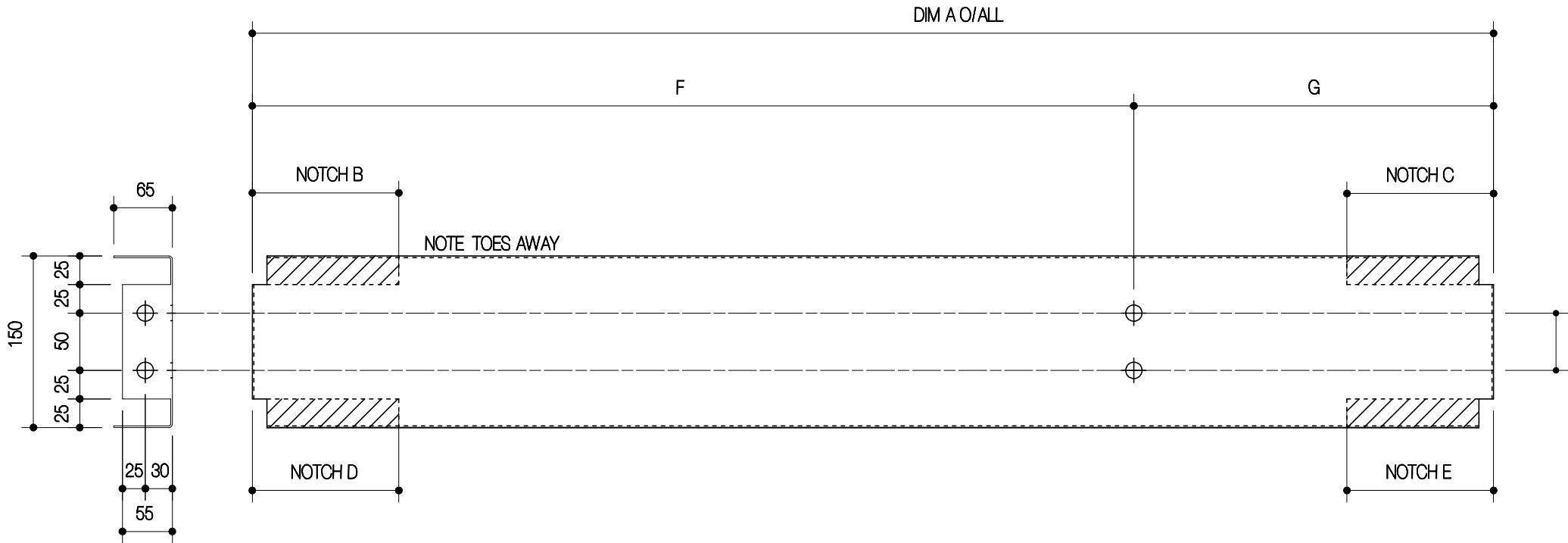


DRG TITLE: TOP HAT FABRICATION DETAIL

NOTES: 1: ALL HOLES 14 DIA. U.N.O

DRAWN BY:	DATE:
CHK'D BY:	DATE:
DRG No: HS-020	Rev: ISSUE: 6th ISSUE
SECTION REF:	

CUSTOMER:
ORDER REF:
SKETCH No:
Hi-SPAN JOB No:





MARK	DIM A	No. OFF	NOTCH LENGTH 70/90/100 mm (0 IF NOT REQUIRED)				ADDITIONAL HOLES IF REQUIRED	
			B	C	D	E	F	G



Hi-SPAN Ltd.
 Ayton Road, Wymondham
 Norwich, Norfolk, NR18 0RD
 Telephone: 01953 603081
 Fax: 01953 607842
 Email: technical@hi-span.com
 Web: www.hi-span.com



DRG TITLE: WCP FABRICATION DRAWING

- NOTES:
- 1: ALL HOLES 14 DIA. U.N.O
 - 2: COUNTERFORMED HOLES IN WEB MARKED 
 - 3: COUNTERFORMED HOLES IN FLG MARKED 

DRAWN BY:

DATE:

CHK'D BY:

DATE:

DRG No: HS-021

Rev:

ISSUE: 6th ISSUE

SECTION REF:

CUSTOMER:

ORDER REF:

SKETCH No:

Hi-SPAN JOB No: